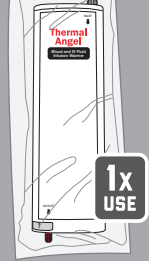
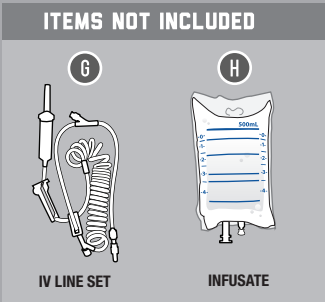


# THERMAL ANGEL ULTRA EMERGENCY PACK (TA-UEP)

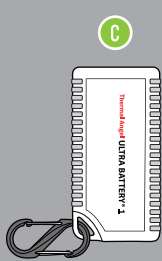
## ORDER INFORMATION



THERMAL ANGEL - QTY 2  
(TA-200)



9" IV EXTENSION SET - QTY 2  
(TA-9EXTNF)



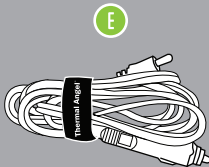
ULTRA BATTERY 1  
(TA-UB1)



ULTRA BATTERY CHARGER  
(TA-UBC)



TIPS  
(INCLUDED W/ TA-UBC)

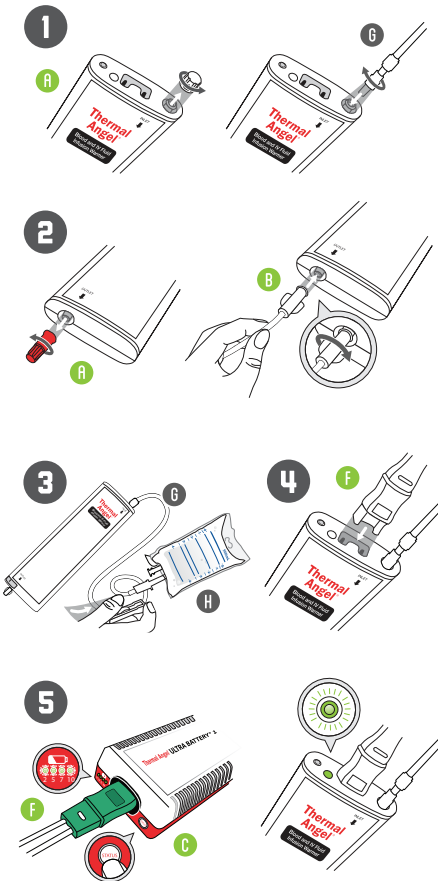


ULTRA VEHICLE CHARGER  
(TA-UVC)

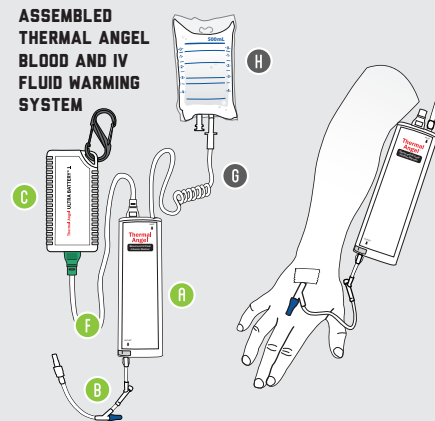


ULTRA POWER CABLE  
(TA-UPC)

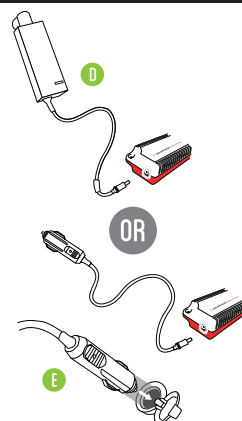
## ASSEMBLY INSTRUCTIONS



## FULLY ASSEMBLED

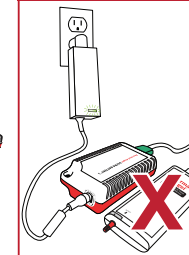


## CHARGING INSTRUCTIONS



### IMPORTANT

The Thermal Angel (TA-200) will NOT operate while the Ultra Battery 1 (TA-UB1) is being charged; allow 90 min. for full recharge.



## COMPLETE PACK

THERMAL ANGEL ULTRA EMERGENCY PACK (TA-UEP)

A B C D D1 E F

## DISPOSABLE ITEMS FOR PACK RELOAD

THERMAL ANGEL DISPOSABLE EMERGENCY PACK RELOAD KIT (TA-DEP)

Thermal Angel (TA-200)  
QTY 4 Each A

9" IV Extension Set (TA-9EXTNF)  
QTY 4 Each B

## MANUFACTURER

Estill Medical Technologies, Inc.  
Phone: (877) 354-0286  
Web: www.ThermalAngel.com

**Thermal Angel®**  
Blood and IV Fluid Infusion Warmer

808-0001-004 REV B (TA-EPI)