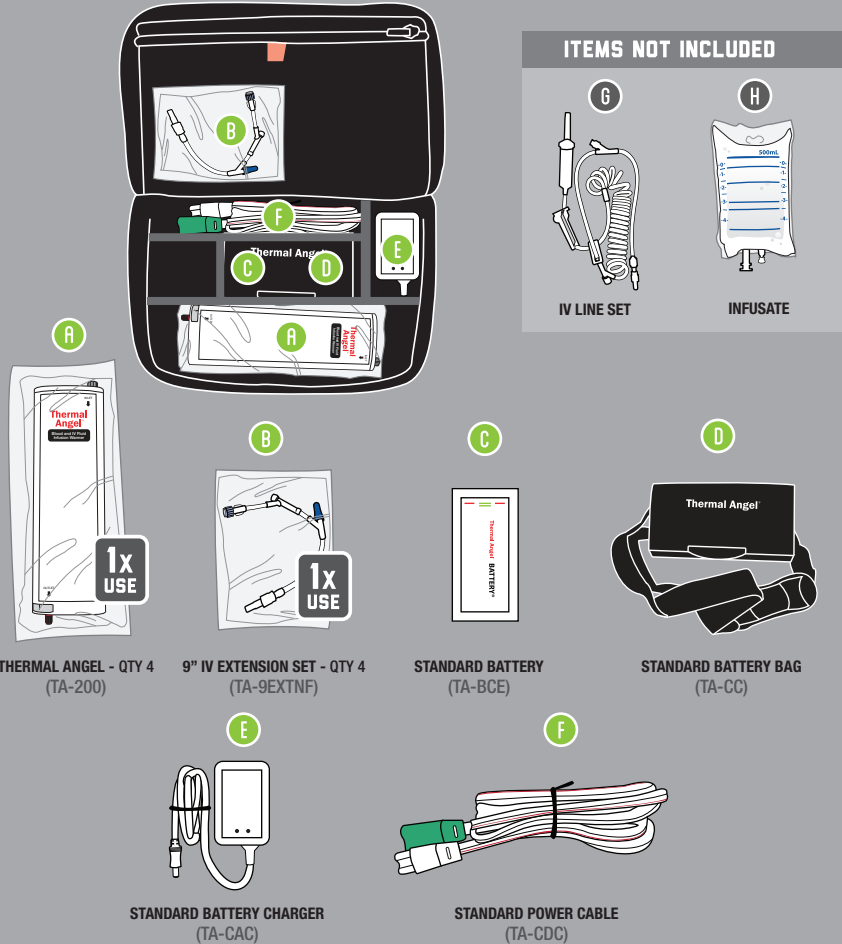
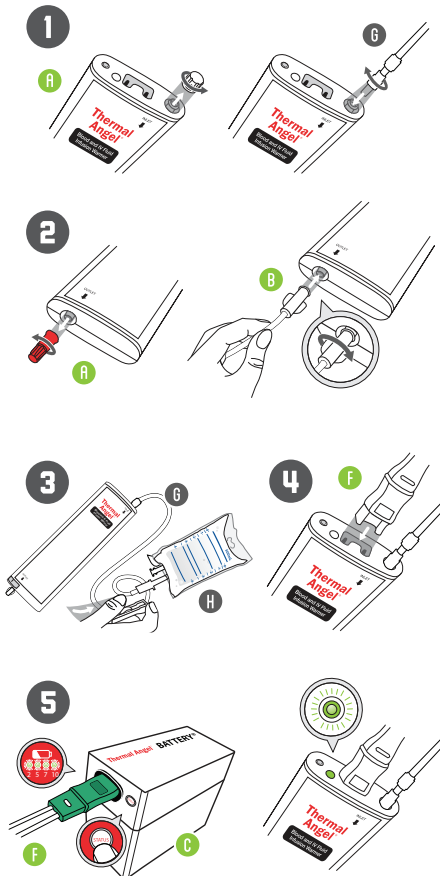


THERMAL ANGEL STANDARD EMERGENCY PACK (TA-SEP)

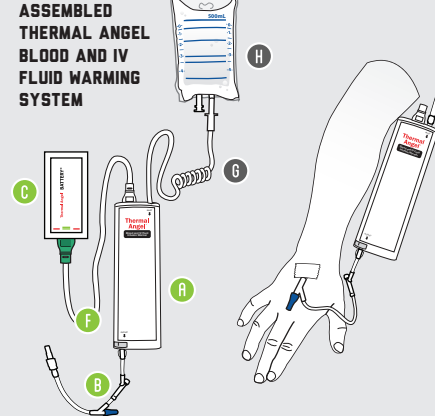
ORDER INFORMATION



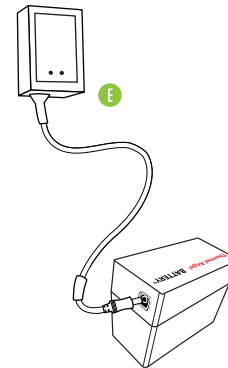
ASSEMBLY INSTRUCTIONS



FULLY ASSEMBLED

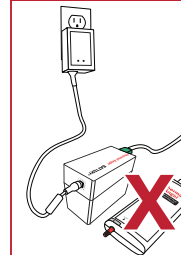


CHARGING INSTRUCTIONS



IMPORTANT

The Thermal Angel (TA-200) will NOT operate while the Standard Battery (TA-BCE) is being charged; allow 14 hours for full recharge.



COMPLETE PACK

THERMAL ANGEL STANDARD EMERGENCY PACK (TA-SEP)

A B C D E F

DISPOSABLE ITEMS FOR PACK RELOAD

THERMAL ANGEL DISPOSABLE EMERGENCY PACK RELOAD KIT (TA-DEP)

Thermal Angel (TA-200)

QTY 4 Each A

9" IV Extension Set (TA-9EXTNF)

QTY 4 Each B

MANUFACTURER

Estill Medical Technologies, Inc.

Phone: (877) 354-0286

Web: www.ThermalAngel.com

Thermal Angel®

Blood and IV Fluid Infusion Warmer

808-0001-004 REV B (TA-EPI)